



INDOFINE Chemical Company, Inc.

121 Stryker Lane, Bldg. 30, Suite 1 • Hillsborough, NJ 08844 • U.S.A.

Phone: (908) 359-6778 • FAX: (908) 359-1179

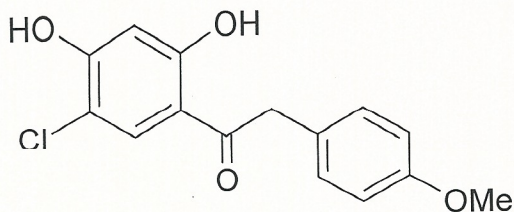
website: www.indofinechemical.com

e-mail: chemical@indofinechemical.com

CERTIFICATE OF ANALYSIS

Cat. No.: 19-758

<u>Product:</u>	5'-CHLORO-2',4'-DIHYDROXY- 2(4'-METHOXYPHENYL) ACETOPHENONE
<u>Lot No.:</u>	0406137
<u>Molecular Formula:</u>	C ₁₅ H ₁₃ ClO ₄
<u>Molecular Weight:</u>	292.72
<u>Melting Point:</u>	152-154.5°C
<u>Appearance:</u>	Off-white powder
<u>Solubility:</u>	Soluble in chloroform
<u>NMR Spectrum:</u>	Enclosed
<u>IR Spectrum:</u>	Enclosed
<u>Storage:</u>	Store in cool dry place
<u>Purity (HPLC):</u>	99+%





INDOFINE Chemical Company, Inc.

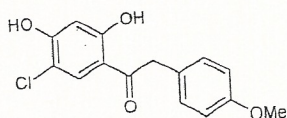
121 Stryker Lane, Bldg. 30, Suite 1 • Hillsborough, NJ 08844 • U.S.A.

Phone: (908) 359-6778 • FAX: (908) 359-1179

website: www.indofinechemical.com

e-mail: chemical@indofinechemical.com

HPLC ANALYSIS



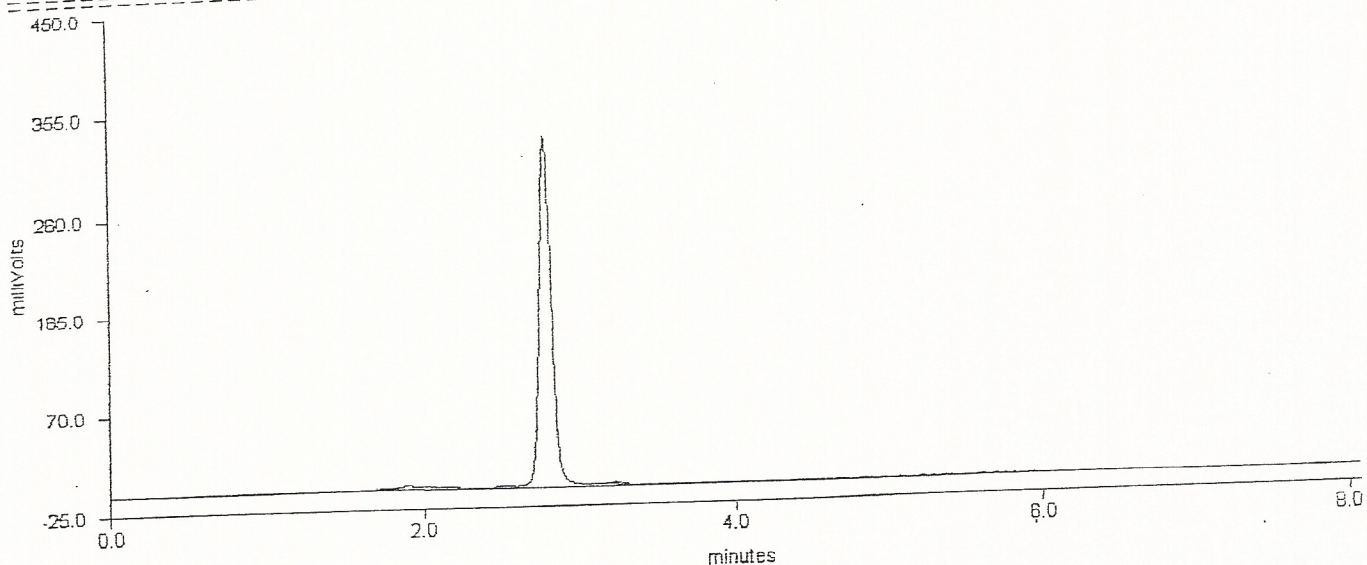
Catalog no.: 19-758

Product name: 5'-Chloro-2',4'-Dihydroxy-2(4'-methoxyphenyl)acetophenone

Lot No.: 0406137

DELTA CHROMATOGRAPHY DATA SYSTEM

STRIPCHART PLOT FOR CHROMATOGRAM - c:\deltaw\data\np-002.raw



DELTA CHROMATOGRAPHY DATA SYSTEM

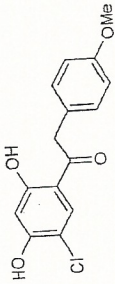
LISTING PEAK TABLE FOR CHROMATOGRAM - c:\deltaw\data\np-002.raw.RAW

#	Type Name	Ret.Time	Area(uVSec)	Height(mV)	Area Percent
1	PB	2.79	1942334	333.1	99.7
2	MM	3.22	6095	1.5	0.3

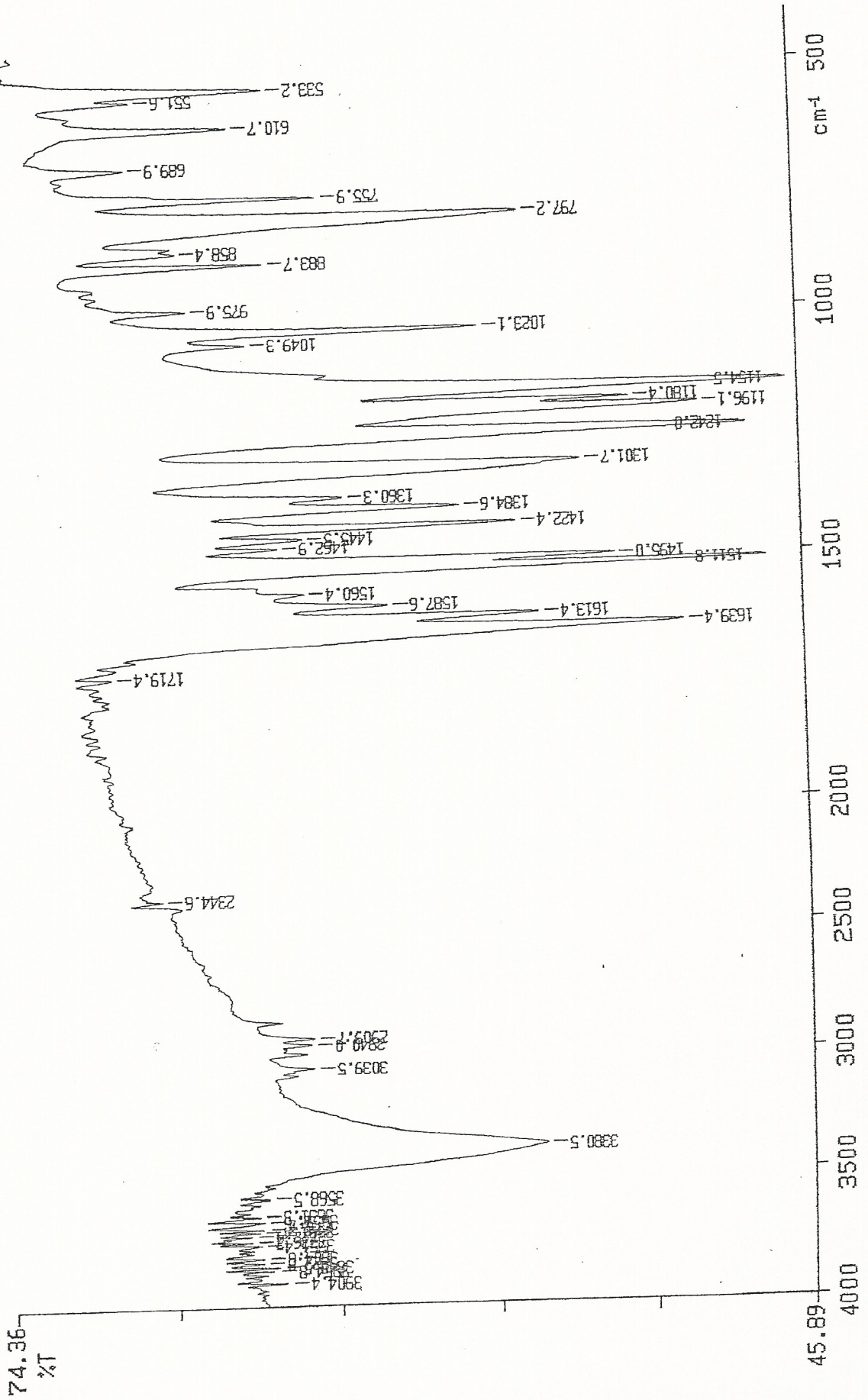


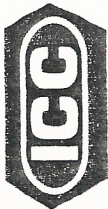
INDOFINE Chemical Company, Inc.
121 STRYKER LANE
BLDG. 30, SUITE 1
HILLSBOROUGH, NJ 08844

Catalog no.: 19-758
Product name: 5-Chloro-2',4'-Dihydroxy-2(4'-methoxyphenyl)acetophenone
Lot No.: 0406137



PERKIN ELMER





INDOFINE Chemical Company, Inc.

121 STRYKER LANE
BLDG. 30, SUITE 1
HILLSBOROUGH, NJ 08844

Pulse Sequence: s2pu1

Catalog no.: 19-758

Product name: 5'-Chloro-2',4'-Dihydroxy-2(4'-methoxyphenyl)acetophenone

Lot No.: 0406137

